



Engage your pupils in an exciting multi-media RE lesson!

All you need to know about bringing GSUS Live to your school

Information for Headteachers



Helping teenagers think about real-life issues through the teachings of Jesus

GSUS Live helps secondary school students explore the themes of fear, forgiveness and rejection through the teachings of Jesus.

It's an interactive learning experience on board a multi-media classroom and is consistent with requirements for the statutory provision of RE for Key Stage 3 students.

Since 2000, *GSUS Live* has supported high quality teaching in over 800 secondary schools, with nearly half a million student visits.

Bible story animations, contemporary songs plus short films on historical and famous public figures such as Martin Luther King and Malala Yousafzai are all used to help pupils look at real-life issues through a Christian perspective.

This brochure aims to give you all the information you need about bringing this exciting FREE resource to your school. And don't forget more details are available online at gsuslive.co.uk or you can call the *GSUS Live* co-ordinator on 07398 280329.

"GSUS Live was a really thought-provoking series of activities which prompted students to think through scenarios, make decisions and offer advice. A truly interactive experience which our students enjoyed, engaged with and learned from."

Sian Hartle, Principal at Cockshut Hill College, Birmingham



Contents

- 4 What is *GSUS Live*?
- 5 Lesson outline
- 7 Programme layout
- 8 Timings
- 9 Specifications
- 10 What other schools say
- 11 How to book



What is GSUS Live?

GSUS Live is designed to complement and support your school's existing R.E., Ethics, PSHE or Citizenship curriculum. Core skills developed include: engaging with existential questions, exploring people's beliefs, teachings and practices, empathy and considering personal responses. The resource supports students in their Spiritual, Moral, Social and Cultural (SMSC) development. *GSUS Live* also covers key values such as forgiveness and respect.

It's presented and brought to you by a local church volunteer on board a purpose-built mobile classroom. The presentation is in three parts and lasts about one hour.

As the students enter the unit, the sound and light system create an atmosphere of anticipation. The pupils are seated at a desk with a touch screen and headphones.



"The presence of GSUS Live raised a great deal of excitement and interest in school. Jesus was definitely cool that week!"

Fran Bryant, RE Teacher, Ebbw Vale Comprehensive School.



Here's an outline of the multi-media lesson:

Introduction:

- A short film introduces the themes of Forgiveness, Fear & Rejection.
- A presenter gives brief instructions to help the students use the multi-media programme.

Development:

- The students, seated in pairs at a computer workstation, will choose a theme: Forgiveness, Fear or Rejection and then commence the multi-media programme. Students will only have time to investigate one theme.
- Each theme has four sections. Each section is introduced by a short film clip, followed by an instant message asking for help & advice. Students then have several choices available to help them formulate a response to each message.
- These resources are:
 - Extracts from the Bible - which is both seen and heard.
 - Historical short films showing people such as Mother Teresa, Martin Luther King and Malala Yousafzai.
 - Contemporary Christian music.
 - Doodle animations showing stories from the Bible.
- Students are then given five possible responses. Once a response has been made, students move on to the next section. With each section the story develops.

Final Review:

At the end of the multi-media programme the students' responses are printed out for further work/reflection. The presenter brings the lesson to a conclusion by seeing if there are key points students wish to make. The summary will be relevant to all three themes.

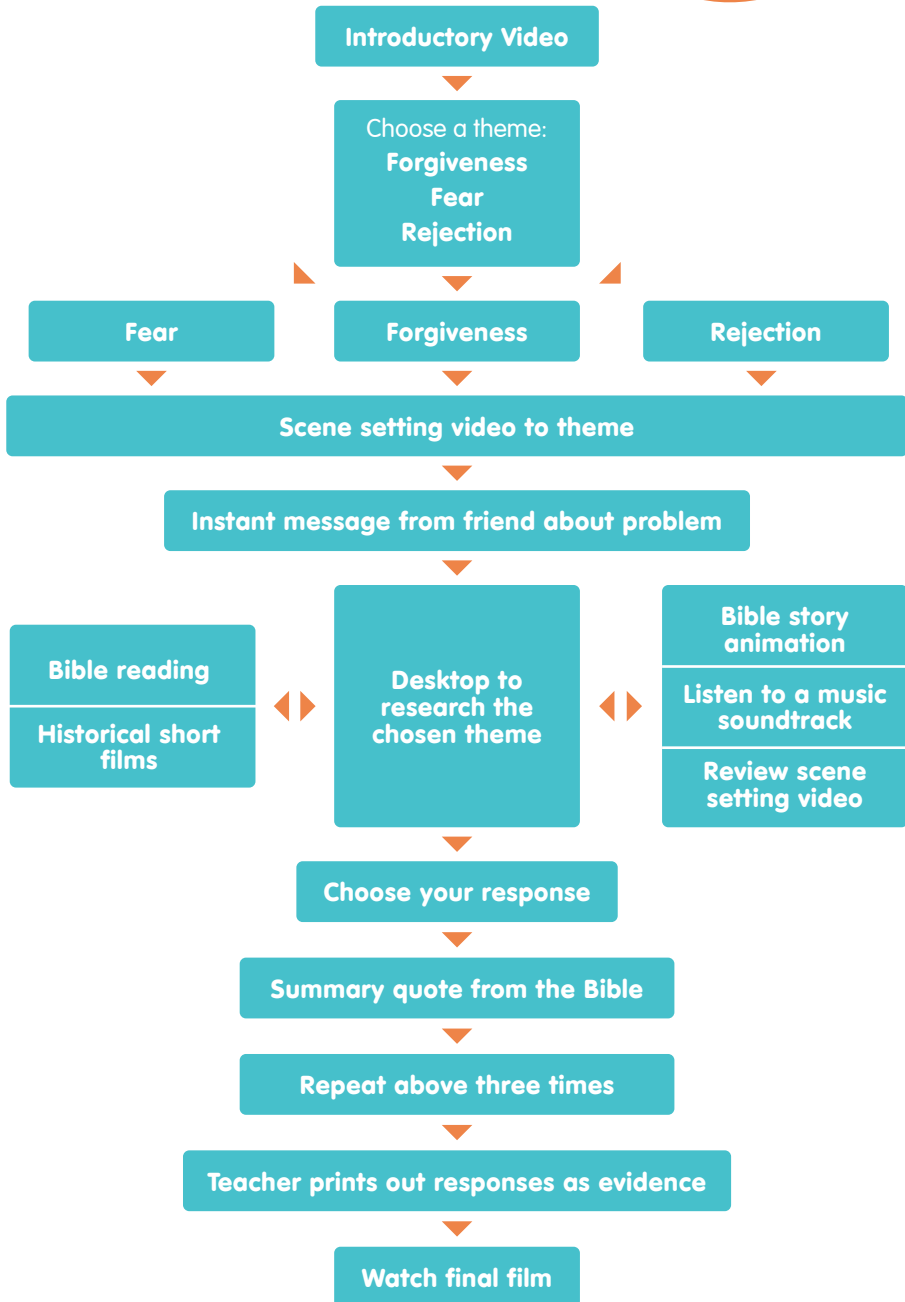
Fuller feedback should be left to a subsequent lesson - we suggest that the time spent in the mobile classroom is the first of up to a four lesson process. More details are available in a specially prepared Teacher's Pack which includes optional worksheets and a scheme of work.

GSUS Live

Interactive Programme

How it works





Timings

Set-up time for mobile classroom (once a week) 2 hours

Timing for presentation

Organising and arranging of students	5 mins
Introductory video	3 mins
Presenter introduction	3 mins
Multimedia - 4 sections	26 mins
Presenter conclusion	5 mins
Question and exit	3 mins
Presentation time in total	45 mins (approx)

Maximum number of sessions per day 7 in total

Take down time for mobile classroom (once a week) 2 hours



Specifications

Dimensions

With the towing unit the total length is 16.5m. The trailer is approximately 14.5m long. The trailer width is 2.5m, but extends to 4.3m with the pod deployed. The height is 4.1m. The trailer will occupy 60sqm when it is parked with the pod open, the unit is about the size of six car parking spaces.

Weight

Trailer and tow unit approx. 21 tonnes. Trailer approx. 14 tonnes

Parking Surface

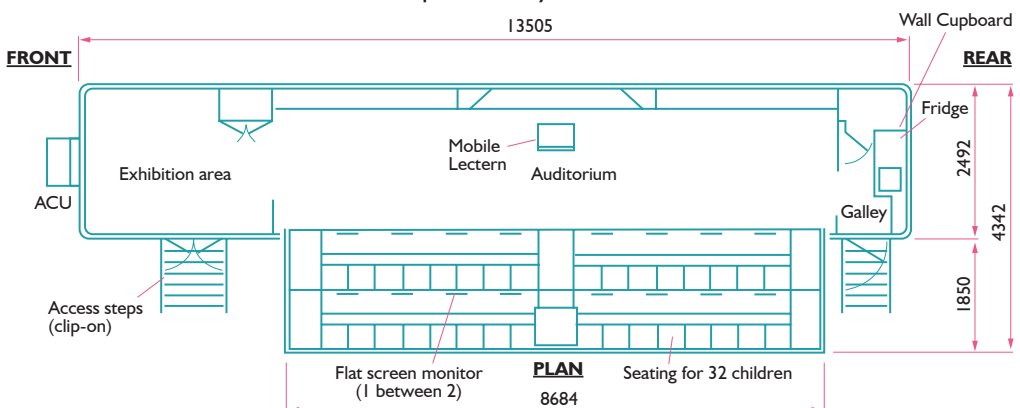
Hard standing is the ideal. The unit will be supplied with 'spreader plates' for grass or hard soil surfaces. The surface should be as flat as possible but if there is a slope the vehicle should be parked up the slope rather than across the slope.

Power

The power supply consists of a 230/250 volt single-phase current at 50Hz, standard supply in the UK. For full operation a 32amp capacity is required. However, if this is unavailable, the vehicle has its own generator.

Security/Safety

There is an alarm system covering the two doors. Any attempt at forced entry will activate a visual and audible alarm. There are detectors fitted that will set off the alarm if entry is gained, even normally, without switching off the alarm system. Any tampering with the battery pack for the alarm system will activate the alarm. The unit is fitted with smoke detectors and the appropriate fire extinguishers. The upholstery etc. is to NHS fire resistance standards. A full risk assessment was carried out during the commissioning of the Mobile Classroom and annual reviews are undertaken. The mobile classroom has a small medical kit. Disabled access is provided by a chair lift.



What others say about GSUS Live!

Hundreds of thousands of school children across the country have already experienced *GSUS Live* since its launch in 2000. It has been highly acclaimed by both students and staff in every school it has visited. This trusted resource is operated by *Counties*, an organisation with over 25 years' experience of working in schools.

“*GSUS Live* was a great resource for our students to be able to access the RE curriculum through a fun, relevant, and interactive way. The student feedback was extremely positive; they were attentive and engaged in the activities. As a school I am sure without a shadow of a doubt that we would have *GSUS Live* back in the next few years.”

Sally Nathan, RE subject leader at Vyners School, Ickenham

“We were extremely impressed with the sophisticated thought and reflection that had gone into the planning and preparation of the questions for students. “Our students listening, reflection and empathy skills at KS3 were exemplary. “*GSUS Live* triggered plenty of thought in our young citizens!”

Claire Fry, Ethics Curriculum Lead at Torpoint Community College, Cornwall.

“It was a really good experience. All the children enjoyed it from Year 6 to Year 8. All the pupils found it relevant and it has given us something for discussion back in the classroom.”

Lloyd Roberts, Principal, St Bede's Catholic Middle School, Redditch.

How do I book?

This brochure should have been given to you by your local organiser. Booking *GSUS Live* is made in cooperation with this person. Please give the completed booking form to your local organiser who will initiate the booking of *GSUS Live*. Your local organiser will liaise with the headteacher and others in the school regarding dates, timetables etc.

Part of the planning process includes a visit by the *GSUS Live* Schools' co-ordinator to discuss siting, safety and security.

Other important details

Insurance

The mobile classroom has its own insurance cover whilst on school premises, including Public Liability insurance.

Safeguarding

Counties has its own, approved, Child Protection Policy and *GSUS Live* staff have undergone DBS checks. Your local organiser will always use DBS checked and trained presenters, and will take care to ensure they comply with your school's Safeguarding Policy and other Policies and Procedures. Please ensure that your staff provide copies of these policies to your local *GSUS Live* organiser, who remains your primary contact throughout the booking.



“GSUS Live was expertly presented, by enthusiastic, skilled and deeply knowledgeable staff - the material used is of the highest quality and is multi-layered in approach.

“It develops students Spiritually, Morally, Socially and Culturally and complements RE curricula. The session builds on British values of: Integrity, Respect, Optimism, Responsibility, Appreciation, Aspiration, Generosity and Inclusivity. It develops students understanding about the Christian heritage of our country and helps them to develop positive character traits, through interactive case studies.

“The resource supports safeguarding, addresses issues of bullying; emotional illiteracy and religious literacy. It also complements and adds to a strong positive culture and ethos within the school community. I fully recommend it to all schools, the message and the medium of the message is equally applicable to culturally and religiously diverse inner city schools, to schools in the leafy suburbs, or schools in the independent sector.”

Ron Skelton M.Ed. B.Phil. B.Ed (Hons), Headteacher,
Broadway Academy, Birmingham.

Your local organiser is:

Tel:

www.gsuslive.co.uk

T: 01373 823013

E: gsuslive@countiesuk.org

30 Haynes Road
Westbury
Wiltshire
BA13 3HD

GSUS Live is a Counties resource. Counties is a registered Charity No. 264278 and a Company limited by guarantee registered in England and Wales No. 1041761.

